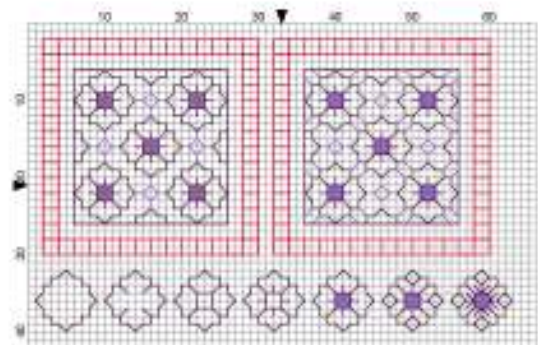
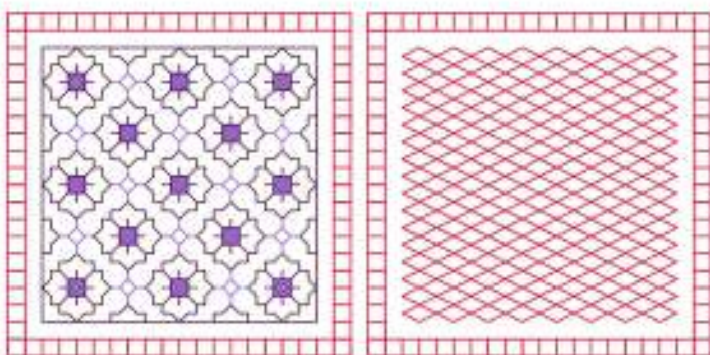
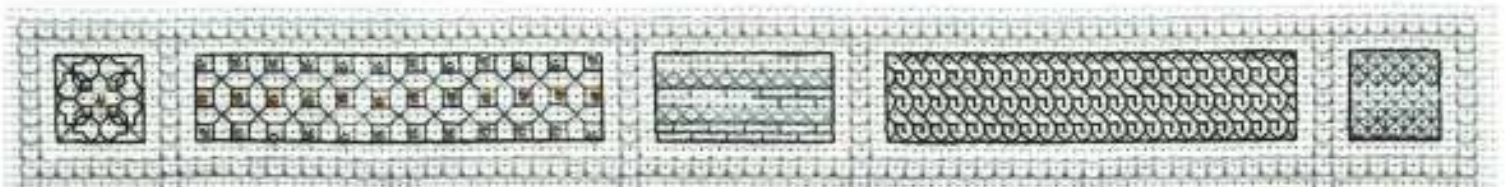
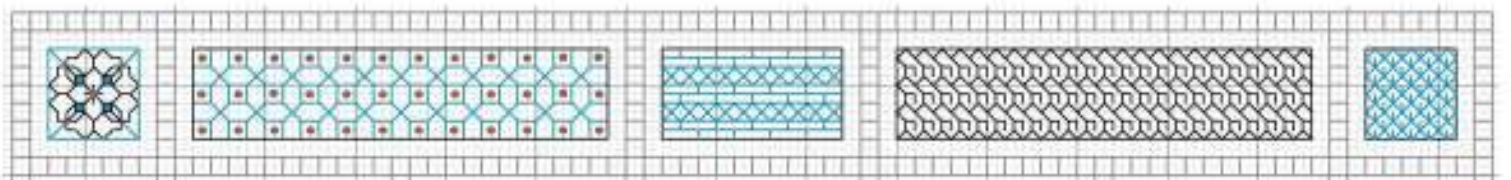
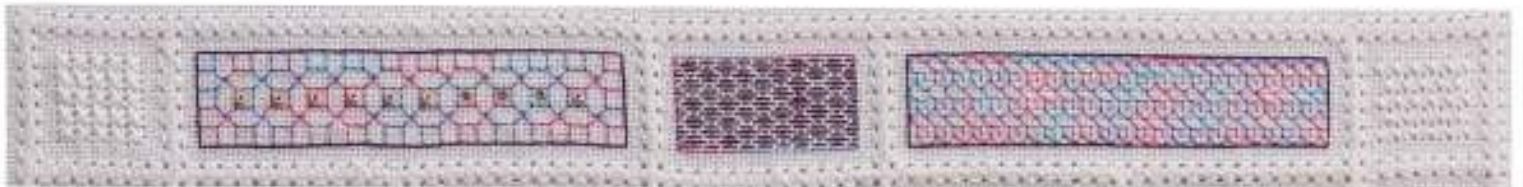
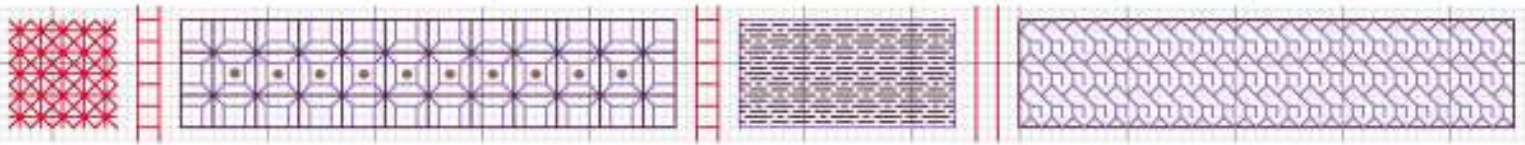


PANDORA'S BOX

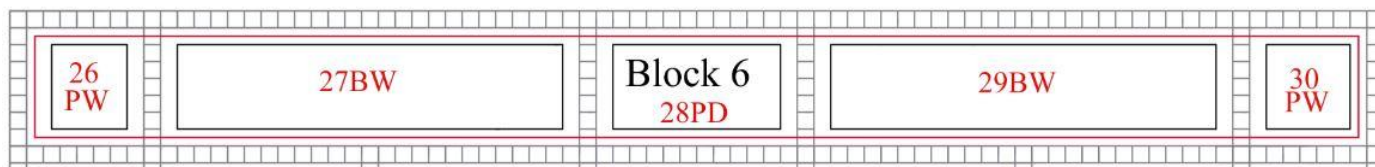
Blackwork Journey - Designs by Elizabeth Almond

Block 6 Patterns 26 - 30



Pin cushion & Scissor keep

Block 6 Evenweave Work Sequence



Block 6 Evenweave Patterns 26 - 30

Set within a border of Four-sided stitch

Locate Block 6 Patterns 26 - 30 on the Master Chart.

Note: The patterns follow diagonally across the chart so some blocks will have more than one block of the same technique. (See Master chart)

Grid Size: 32W x 136H

Design Size: 1.29 x 11.71 inches, 18 x 164 stitches This block is worked over the full width of the pattern.

Legend:

■ [2] DMC-550 ANC-101 DLE- violet - vy dk

■ [2] DMC-333 ANC-110 DLE- Lavender - med

Call Outs:

■ [2] DLE-E3852 Dark Gold DMC Light Effects

Backstitch Lines:

— DMC-550 violet - vy dk

— DMC-666 christmas red - br

— DMC-333 Lavender - med

French Knots:

● DMC-550 violet - vy dk

Beads:

● MHG-557 Mill Hill Glass Beads-Gold

Stitches Used:

Back stitch, one strand

Cross stitch, two strands

Detached Eyelet, Cotton P rle or two strands of floss

Anchor 1325 Iris - variegated, three skeins

Anchor 1325 - is represented by DMC-333 Lavender on the chart.

DMC Cotton P rle No.12, white, one ball

DMC Cotton P rle No.12 - is represented by DMC-666 Christmas red on the chart.

Do not add the beads until after the embroidery has been completed.

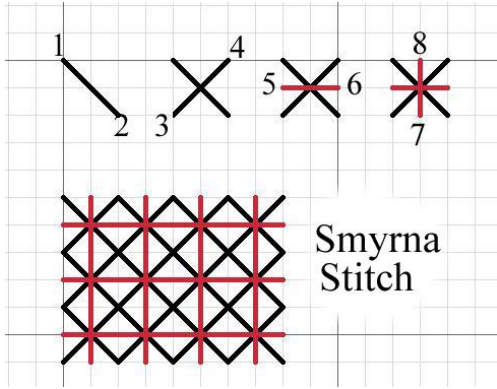


Block 6 Patterns 26 - 30

The four-sided stitch framework has been used to create squares and rectangles. The pattern blocks are inserted into this framework

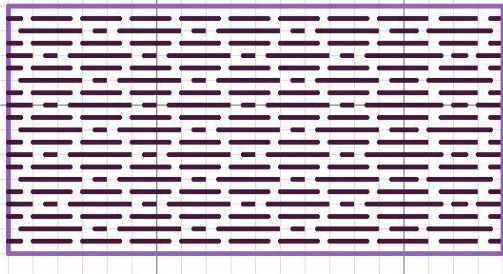
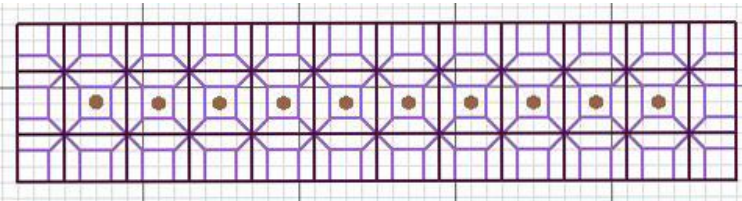
Pattern 26 Smyrna Cross – pulled thread work

1 Using DMC Cotton P rle No.12 insert the Smyrna Cross working from left to right over 4 threads. The diagonal cross is worked first, followed by the upright cross (See diagrams). Pull the stitches tightly to create the holes.



Smyrna Cross

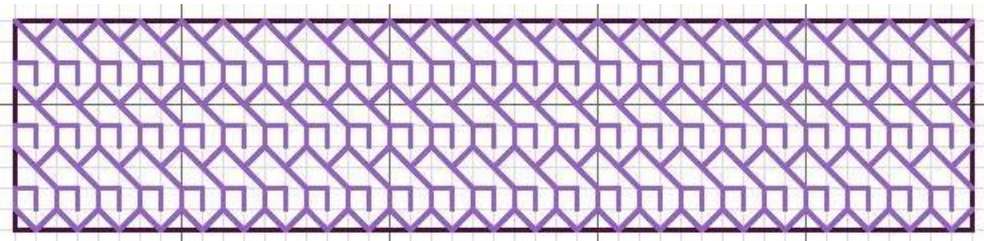
Pattern 27 Blackwork pattern (see chart) Worked in Anchor 1325, outlined in DMC 550



Pattern 28 Pattern darning

1. Starting from the top left hand corner of the motif using one strand of DMC 550, work across the row following the pattern. The threads are worked over 5, 3 and 1 thread
2. Work a rectangle round the pattern in Anchor 1325

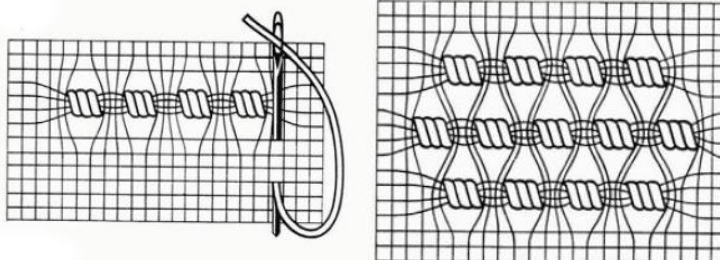
Pattern 29 Blackwork pattern (see chart) Worked in Anchor 1325, outlined in DMC 550



Pattern 30 Coil Stitch

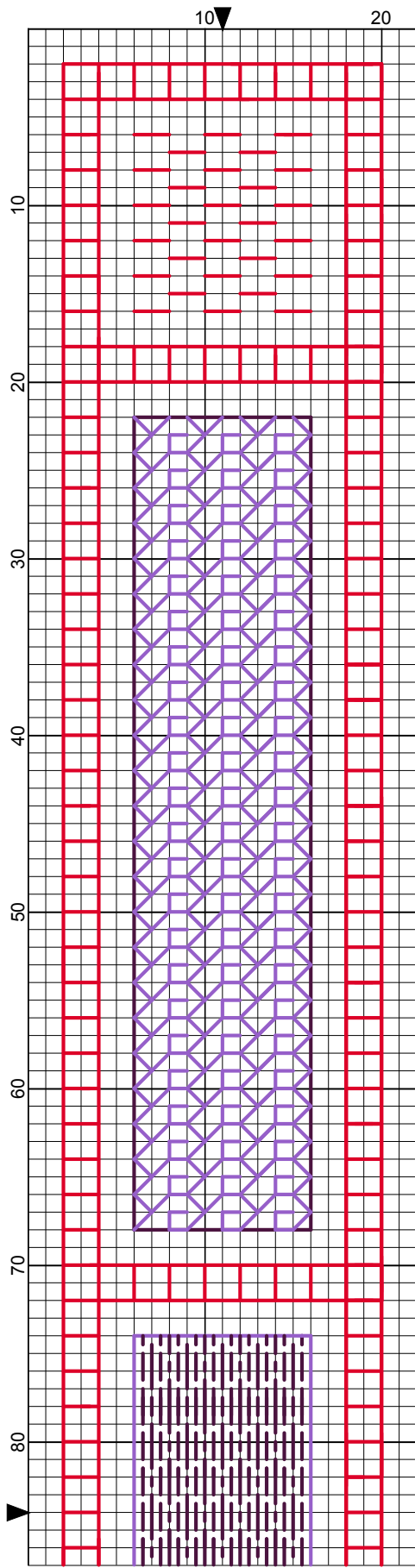
Using DMC Cotton P rle No.12, work the Coil stitch over 4 threads.

1. Row 1 work from left to right, working 3 stitches in the same place, pulling each stitch tight. Leave four threads; work 3 stitches etc until the row has been completed.



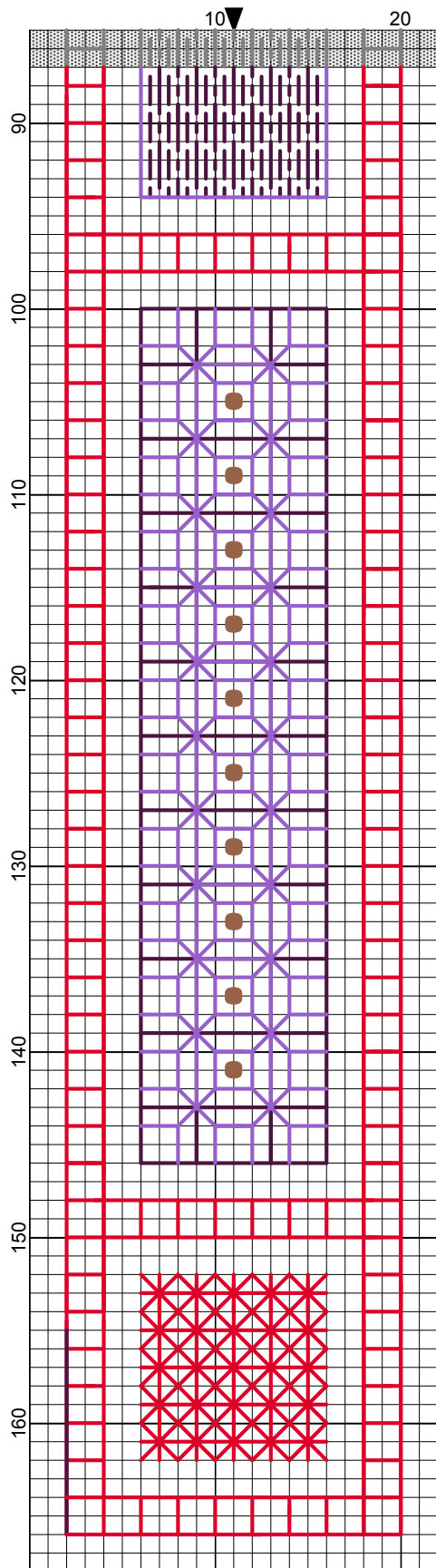
2. Turn the work. Work Row 2- right to left. Look at Diagram 1 to see where the needle is placed. Repeat each row until the whole area has been completed.

Pandora's Box Block 6 Evenweave



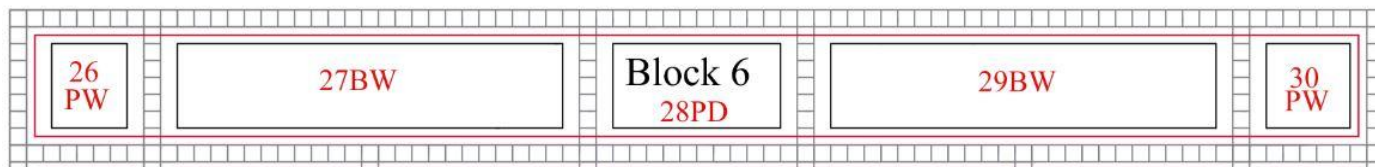
- Backstitches:
- DMC-550
 - DMC-666
 - DMC-333
- Beads:
- MHG-557

Pandora's Box Block 6 Evenweave



Elizabeth Almond

Block 6 Aida Work Sequence



Block 6 Instructions Aida Patterns 26- 30 This block works across the full width of the pattern.

Set within a border of Four-sided stitch worked in two strands of DMC318 Pale grey.

Locate Block 6 Patterns 26 - 30 on the Master Chart.

Note: The patterns follow diagonally across the chart so some blocks will have more than one block of the same technique. (See Master chart) The two charts are NOT identical. It is not possible to work pulled thread stitches on Aida so alternative patterns have been included. The fabric and stitch variations have led to several patterns being placed in different parts of the chart. Please follow the chart you have selected for the fabric.

Threads: 4 colours

DMC-310 Black, one skein

DMC 318 Pale grey, one skein The pale grey 318 is used for the pulled thread framework work only.

DMC 318 Pale Grey –is represented by DMC 414 steel grey on the chart

DMC 53 grey/black variegated, three skeins -
represented on the chart by DMC-3843 electric blue

DMC Light Effects DLE-E3852 Dark Gold, one skein

Mill Hill Glass Beads 557 -Gold

Note: On the chart for clarity DMC 414 Steel Grey represents DMC 318 pale grey and DMC 3843 electric blue represents DMC53 variegated.

Grid Size: 32W x 136H
Design Area: 2.00" x 9.43" (28 x 132 stitches)

Legend:

▲ ■ [2] DMC-3843 ANC-1089

Backstitch Lines:

— DMC-310 — DMC-414 — DMC-3843

Beads:

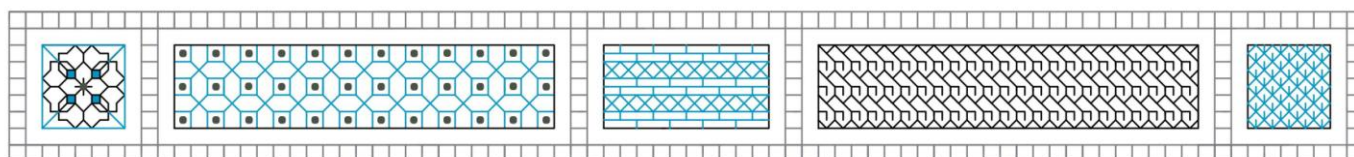
○ MHA-3037 Mill Hill Antique Beads

Stitches Used:

Back stitch, one strand

Cross stitch, two strands

Four-sided stitch, two strands of floss DMC 318 Pale grey

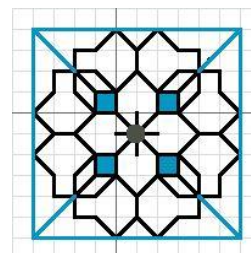


Block 6 Aida Patterns 26 - 30

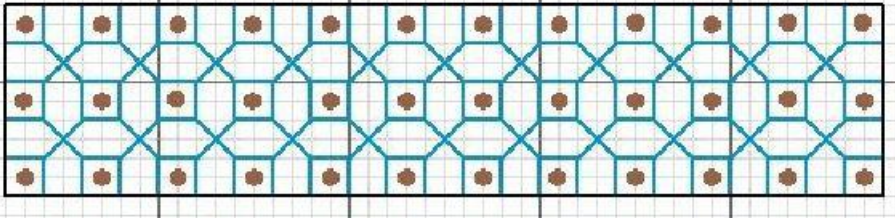
Note: The four-sided stitch framework has been used to create squares and rectangles using two strands of DMC 318. The four-sided stitch is NOT pulled tight on Aida fabric but is treated as an embroidery stitch. The pattern blocks are inserted into this framework.

Pattern 26 Blackwork motif

1. Starting from the centre of the motif work the back stitch in one strand of DMC310. The cross stitch is worked in two strands of DMC53
2. Work a back stitch outline round the square using one strand of DMC 310.



Pattern 27 Simple blackwork squares and crosses with bead embellishments.

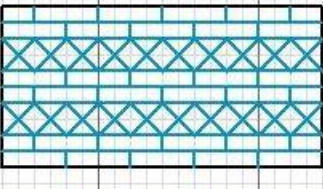


1. Work the squares and diamonds in DMC53.
2. Work the rectangle in DMC310
3. Decide how many beads to add for example, add beads on the centre row or, the two outside rows or, alternate blocks. The choice is yours!

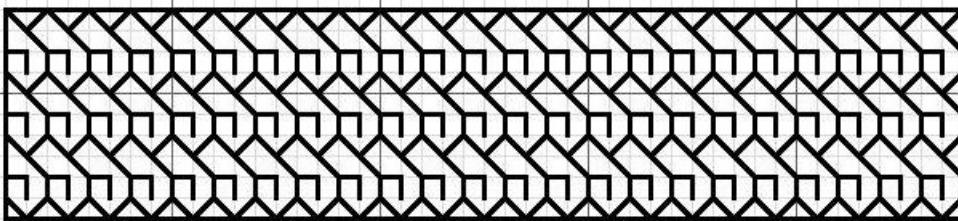
Pattern 28 Blackwork Bricks and Diamonds

Worked in DMC53 variegated and outlined in DMC310

These are embroidery stitches - do **NOT** pull any of the stitches. This is a very attractive medium weight filling stitch suitable for covering small areas.

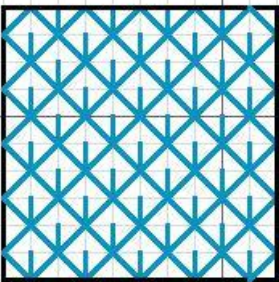


Pattern 29 Blackwork interlocking pattern



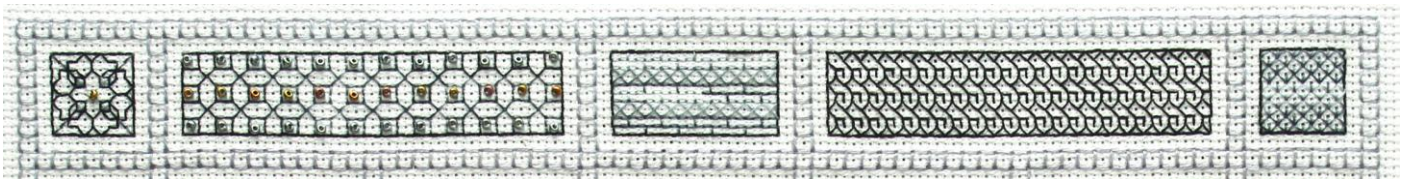
The pattern is very useful for covering areas where a solid but intricate design is required. This worked in DMC310. Working the pattern in the variegated thread would create a much lighter effect.

Pattern 30 Blackwork interlocking diamonds

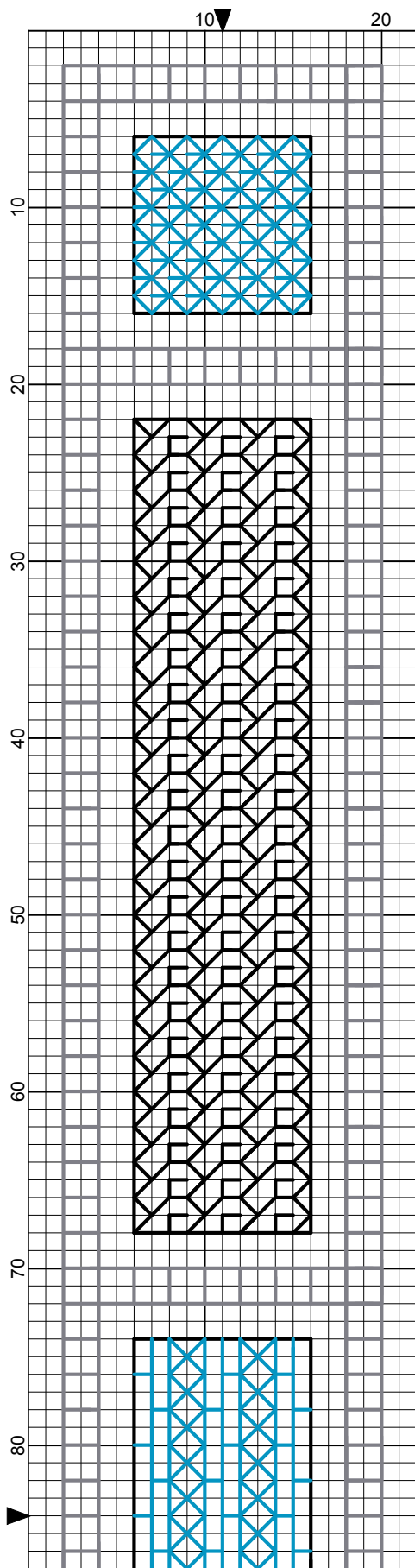


A very simple but dense pattern worked in one strand of DMC53 variegated.

To create a heavier pattern the straight stitches can be worked in DMC310. This pattern can be used to create depth and shading by adding or removing the straight stitches.



Pandora's Box Block 6 Aida



Legend:

▲ ■ DMC-3843

Backstitches:

— DMC-310

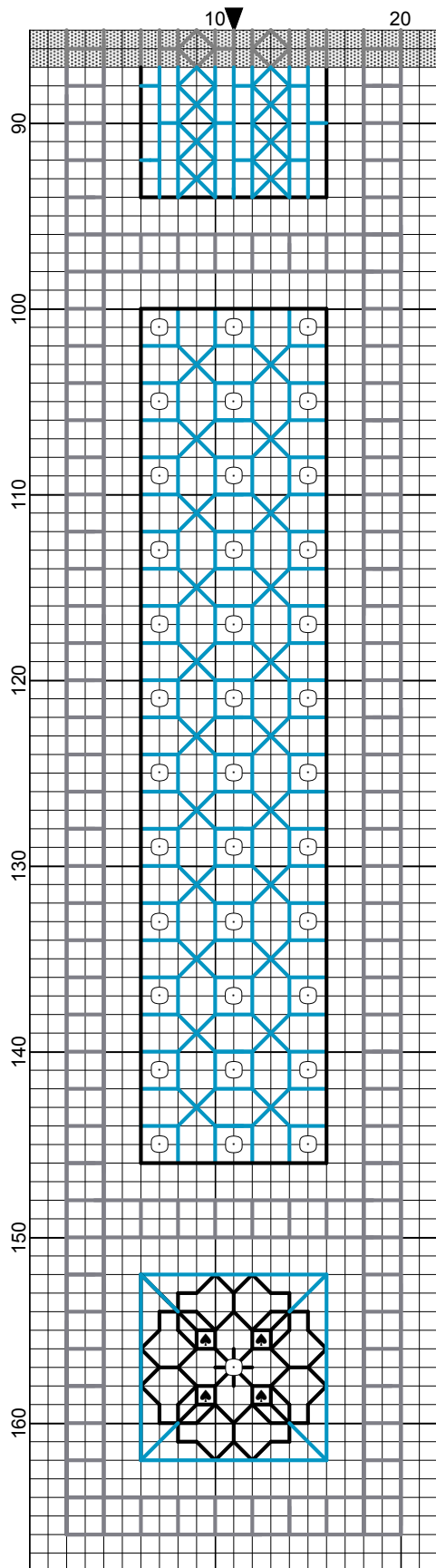
— DMC-414

— DMC-3843

Beads:

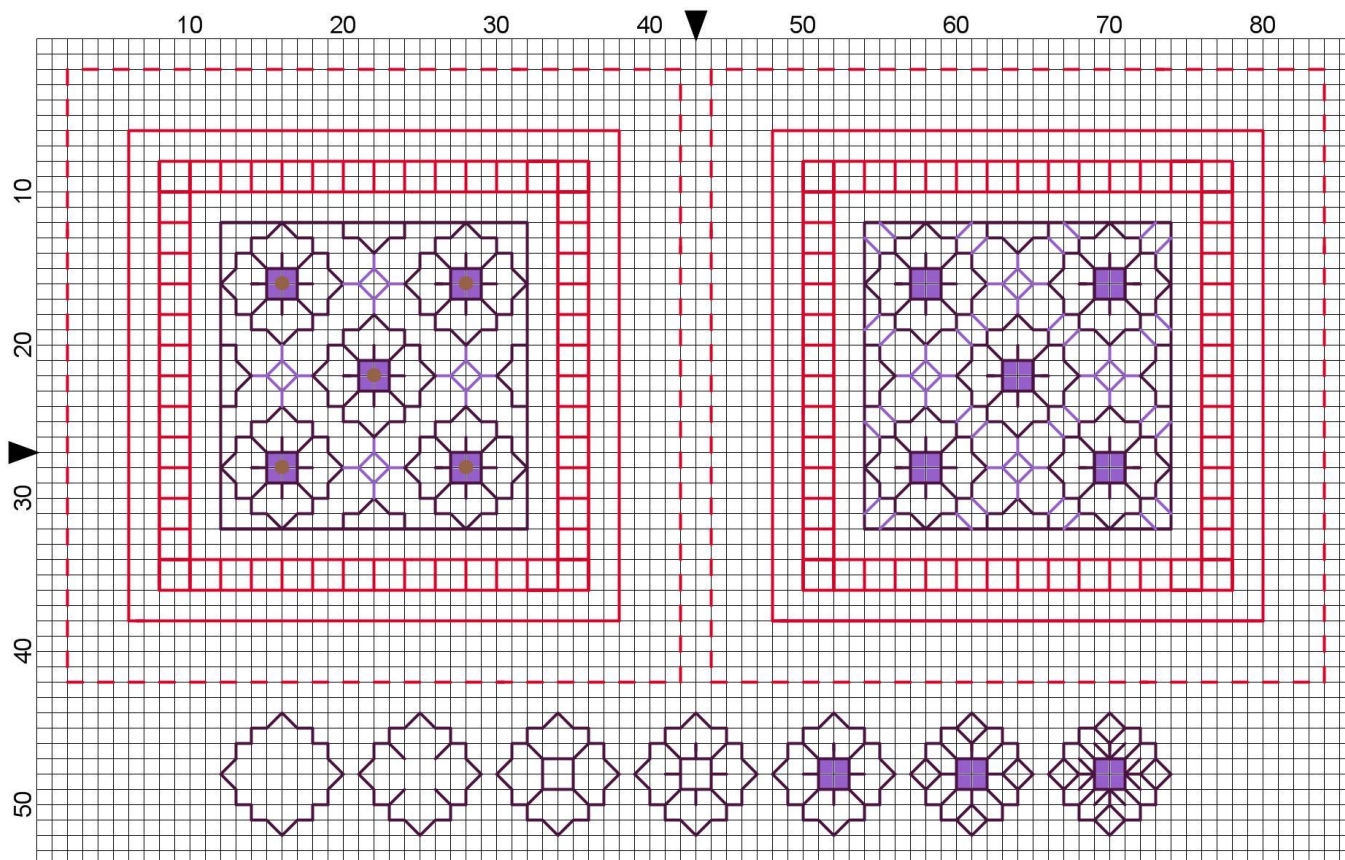
○ MHA-3037

Pandora's Box Block 6 Aida



Elizabeth Almond

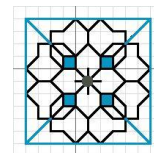
PIN CUSHION OR SCENTED SACHET AND SCISSOR KEEPER



Pattern for Scissor Keeper with possible pattern changes

Scissor Keeper

1. Work the outline and then add or remove the internal lines to change the complexity of the design.
2. The cross stitch is worked in two strands of floss. The back stitch is worked in one strand. Beads can be added to the cross stitch blocks if desired.



By taking the motif Pattern 26 from Block 6 Aida and adding or removing stitches two simple needlework accessories were created.

The scissor keeper and the pin cushion make an attractive addition to the workbox or a special gift for an embroiderer.

Stitches used:

Back stitch, one strand

Back stitch border for slip stitch - Cotton P rle No.12

Cross stitch, two strands

Four-sided stitch, DMC Cotton P rle No.12 or two strands of white floss.

Wave stitch, DMC Cotton P rle No.12 or two strands of floss.

Scissor Keeper

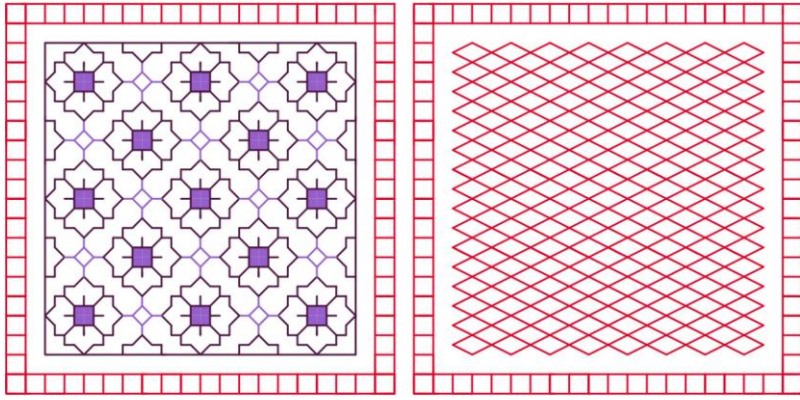
Material:

Two pieces of Zweigart evenweave 28 count or Aida 14 count, 5 x 5 inches

Cord for hanger, 12 inches Wadding, tassel (optional)



Slip stitch the two back stitch rows together



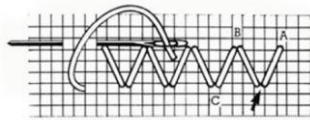
Pin cushion worked in blackwork and wave stitch. (See chart for detail)

Pin Cushion or Scented Sachet

Design Area: 3.71" x 7.71" (52 x 108 stitches)

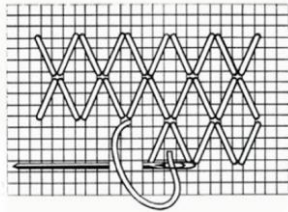
Material: Zweigart evenweave 28 count or Aida 14 count, 2 pieces 7 x 7 inches

Wadding, cord for hanger, tassel (optional) Lavender for scented sachet



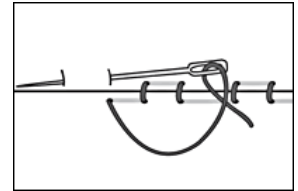
Wave stitch

If the Wave Stitch is being worked on Aida fabric the stitches will be treated as embroidery stitches and NOT pulled.



Work the wave stitch from right to left over four threads. Turn the fabric at the end of each row and repeat until the area has been filled.

Slip stitch



Making up Pin cushion and scissor keeper:

Work the four pieces of embroidery. Add the beads if desired. Place face down on a soft towel and press lightly.

Cut the surplus fabric 8 threads or four blocks away from the four-sided stitch borders... Turn the raw edges in and tack carefully.

Placing the edges together, embroidery side outwards, slip stitch three sides of the pin cushion together using two strands of white floss. Insert the wadding and lavender if used, and close.

Scissor keeper – stitch the hanger into position before slip stitching the edges closed.



Scented sachet and scissor keeper